



J-Integra for Exchange

J-Integra for Exchange is a powerful middleware solution that enables interoperability between Java and Microsoft Exchange. J-Integra for Exchange is part of a comprehensive suite of Enterprise Interoperability Solutions from Intrinsyc Software which includes J-Integra for COM, J-Integra for .NET and J-Integra Espresso. These solutions are used by Fortune 1000 companies to effectively integrate and harness the most powerful features of Java and Microsoft technologies.

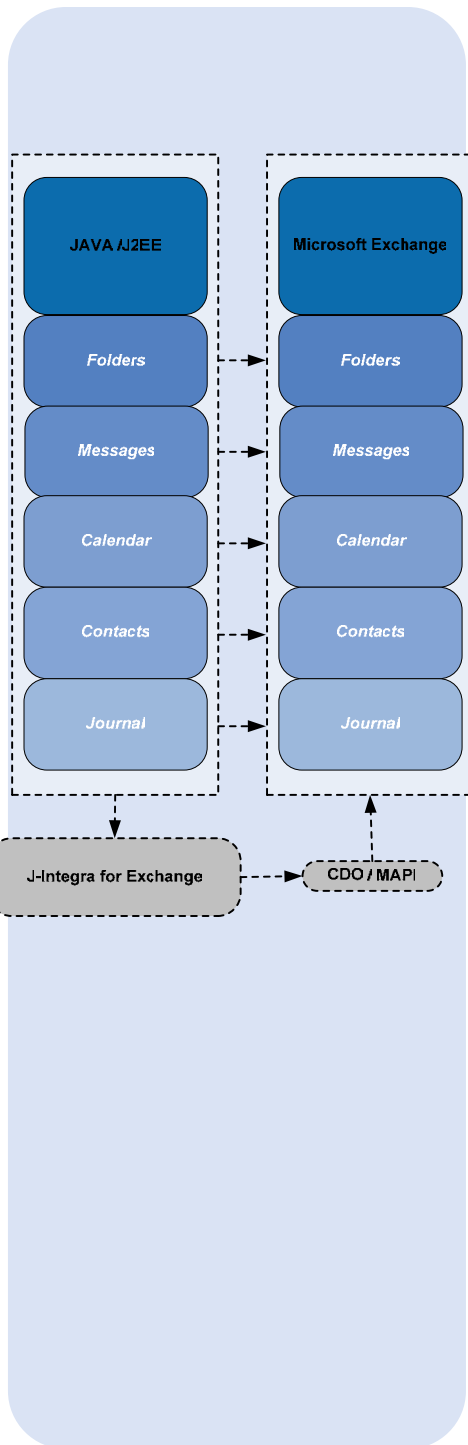
Accessing Microsoft Exchange from Java

Java and Microsoft technologies are integral parts of today's enterprise networks. Until now, there has been no simple, effective way to integrate Microsoft Exchange with J2EE business logic. IMAP/SMTP solutions require additional code and involvement of the IT department for Exchange configuration. Solutions that are pieced together on-the-fly can be inefficient and cumbersome. J-Integra for Exchange offers the first flexible, complete and seamless solution for Java-Exchange interoperability problems.

With J-Integra for Exchange, it is now possible for Java applications to have access to Exchange Server objects such as folders, messages, contacts, journals, and calendar items without the need to write complex native code. J-Integra for Exchange exposes Exchange objects via an API that is familiar to Java developers. Through this API, Exchange objects appear as though they are Java object and can be used directly in your Java/J2EE applications.

Java API for CDO

The Java API for CDO is a complete replica of the original CDO API – the only difference is that it is written in Java. The experienced CDO programmer will find the Java API for CDO easy-to-use as every CDO object or function intuitively maps to a corresponding Java object or method.



Locations

Head Office

700 West Pender Street
10th Floor
Vancouver BC
Canada V6C 1G8
Toll Free: 1 800 474 7644
Telephone: 604 801 6461
Facsimile: 606 801 6417

US Office

11130 NE 33rd Place
Ste 200
Bellevue WA
USA 98004
Telephone: 425 72 4950
Facsimile: 425 732 4901

European Office

Intrinsyc Europe Ltd.
Fountain House
Great Cornbow
Halesowen
West Midlands
UK B63 3BL
Telephone: +44 121 501 6000
Facsimile: +44 121 501 6035

enterprise_sales@intrinsyc.com

j-integra.intrinsyc.com

Copyright© 2005 by Intrinsyc Software International, Inc. All rights reserved. Intrinsyc®, and J-Integra™ are registered trademarks of Intrinsyc Software. All other product names are trademarks or registered trademarks of their respective owners and are hereby acknowledged.

Applications

Some popular uses of J-Integra for Exchange include:

- Mail-enable existing Java/J2EE-based applications using Microsoft Exchange as the backend mail system
- Automate Exchange-specific tasks such as setting up meetings, updating the contacts folder, and checking colleagues' availability using Java

Features

- No configuration required on the Exchange Server
- Seamless integration of JAVA/J2EE applications with Microsoft Exchange
- Leverage the simplicity and familiarity of Java without foregoing an existing investment in Microsoft Exchange
- No need to write complex native code to access Exchange objects
- Access to Exchange folders and messages from Java
- Access to contacts, journals and calendar items from Java
- Uses the existing security features provided by Microsoft Exchange
- Compatibility with Microsoft Exchange versions 5.5, 2000, and 2003
- Compatible with JDK 1.2 or higher
- No reconfiguration of firewalls

Availability

Download a free evaluation at:

<http://j-integra.intrinsyc.com/downloads/>

Microsoft
GOLD CERTIFIED
Partner



For more information, visit Intrinsyc Software's website at:
j-integra.intrinsyc.com

All specifications are subject to change with notice